

E-MISSION POSSIBLE

Unlocking our low-emission future: 29 November 2017
Keynote and Panellists

motu.nz

climate@motu.org.nz



CHARLES D. KOLSTAD - KEYNOTE SPEAKER

Prof. Charles D. Kolstad of Stanford University is an internationally known environmental economist with a focus on industrial organization and public economics. His research interests are in information, uncertainty and regulation, with much of his applied work in the area of climate change and energy markets. He has been a Convening Lead Author for the Intergovernmental Panel on Climate Change (co-recipient of the 2007 Nobel Peace Prize), is a founding Co-Editor of the OUP journal *Review of Environmental Economics & Policy* and serves as an advisor to the State of California on their greenhouse gas cap and trade program. He is a former president of the Association of Environmental and Resource Economists. He is a University Fellow at Resources for the Future, a Fellow of CESifo (Munich) and a Research Associate at the National Bureau of Economic Research.



DR SUZI KERR - SPEAKER

Suzi Kerr is currently a Senior Fellow at Motu and an Adjunct Professor at Victoria University. She graduated from Harvard University in 1995 with a PhD in Economics. From 1998 to 2009 she was Director and Senior Fellow at Motu. In 2010 she won the NZIER Economics Award. She has also worked at the University of Maryland, Resources for the Future, the Joint Center for the Science and Policy of Global Change at MIT, and more recently was a Visiting Professor at Stanford University and at the University of the Andes in Bogotá, Colombia. Her current research work focuses on climate change. She investigates domestic and international climate change policy with special emphasis on emissions pricing and land use in both the tropics and New Zealand. She also leads work on climate change impacts and adaptation in New Zealand.



CATHERINE LEINING - SPEAKER

Catherine Leining joined Motu as a Policy Fellow in November 2013. Her work at Motu focuses on shaping a low-emission future for New Zealand and the evolution of emissions trading in New Zealand and internationally. She has held policy positions at the Ministry for the Environment, Ministry of Foreign Affairs and Trade, Wellington City Council and the NZTA. She served as a negotiator in the New Zealand delegation to the UNFCCC negotiations and helped design the NZ ETS. She trained as a Climate Leader under The Climate Reality Project launched by Al Gore.



MANU CADDIE - PANELLIST

Manu is the business development manager for Hikurangi Enterprises, a charitable company based in Ruatoria. He has a background in local government as an elected representative on Gisborne District Council, a unitary authority and as an accredited RMA Commissioner. Hikurangi Enterprises works with Māori landowners around the East Coast on a range of commercial projects including natural health products made from indigenous plants, with three products going into clinical trials next year. Hikurangi Enterprises is working with Motu Research on a project investigating the barriers and incentives in deals between emitters and landowners interested in carbon farming native forests on East Coast Māori land blocks. The company also supports the establishment of a carbon farming cooperative for landowners and connecting with indigenous communities involved with carbon farming in other parts of the world.



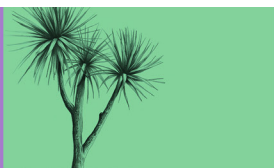
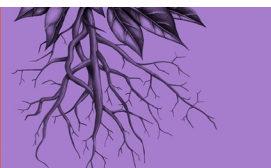
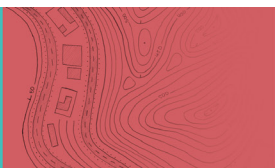
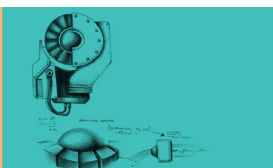
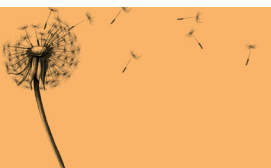
ANDERS CROFOOT - PANELLIST

Anders Crofoot, a former New Yorker with a background in investment funds analysis, farms Castlepoint Station with his wife Emily. The station has 3,700 hectares of sheep, beef and forestry and runs 23,000 stock units. Anders was on the Federated Farmers National Board for six years, sits on the Postal Network Access Committee, chairs the Fertiliser Quality Council (FQC) is a trustee of the AgRecovery Foundation and is a member of the Wairarapa Development Group. He is a past President of the NZ Grassland Association and sat on Wairarapa Biodiversity Steering Group and Wairarapa Landscape Study Steering Group. In the US, Anders was involved with a local land trust that was dedicated to the preservation of open space. He was an early user of geographic information system technology for communicating water quality issues.



NICK GERRITSEN - PANELLIST

Nick is a catalyst and impact entrepreneur. He loves BIG ideas – ones that are going to lead to global structural change – and is committed to the culture of innovation – unafraid of operating beyond existing boundaries. He specialises in developing technology propositions from the ground up, and has been one of the leaders promoting New Zealand's contribution to emerging megatrends such as Clean Technology, the Internet of Things, and



GovTech. Nick graduated from the University of Canterbury with a Bachelor of Laws. He has consulted to NZ On Air, RNZ, Te Mangai Paho (Māori Broadcasting Funding Agency), and the Department of the Prime Minister and Cabinet. Nick completed post grad study at Amsterdam School of Creative Leadership.

LINDA THOMPSON - PANELLIST

Linda is Fonterra's Sustainable Energy & Utilities Group Manager. She has been managing the company's energy portfolio since 2012, ensuring the company minimises its overall energy costs while maintaining a high level of supply security. Her role includes leading the negotiation of large energy contracts and a bi-annual review of major risks to energy supply for Fonterra's largest sites. She represents Fonterra on industry bodies, including the Major Electricity User Group, Major Gas User Group, Business NZ Energy Council and the Coal Association of NZ.

PAUL YOUNG - PANELLIST

Paul Young is a researcher and advocate for climate change solutions. Paul co-founded Generation Zero in 2011 and helped to develop the group's Zero Carbon Act proposal. He has worked as a policy researcher with the Morgan Foundation and as an independent analyst with a focus on emissions reduction pathways. Paul holds a MSc in physics from the University of Otago.

BARRY BARTON - PANELLIST

Barry Barton is a Professor of Law at the University of Waikato, and Director of the Centre for Environmental, Resources and Energy Law. He is a member of the International Bar Association Section on Energy, Environment, Natural Resources and Infrastructure Law, and a director of EDS. His current legal research interests are the areas of mining, energy efficiency, energy efficiency in rental accommodation, electric vehicles, and climate change mitigation.

SIMON COATES - PANELLIST

Simon Coates is a director at Concept Consulting, where he heads up the modelling practice. He developed several of the market forecasting and analysis tools used by Concept for analysis of the electricity, gas, transport, and primary industrial sectors. He has a particular focus on environmental issues: advising on policy design and market analysis on emissions trading, renewable energy, energy efficiency, and emissions forecasting. Simon has advised governments, regulators, utilities, and consumer parties on a range of issues. He has extensive corporate experience, and was a general manager at Contact Energy.

ADRIAN MACEY - PANELLIST

Dr Adrian Macey is Adjunct Professor at the New Zealand Climate Change Research Institute, and a Senior Associate of the Institute for Governance and Policy Studies, Victoria University of Wellington. He was previously New Zealand's Chief Trade Negotiator, and Ambassador to France and the OECD, and was New Zealand's first climate change ambassador. In 2011 he chaired the UNFCCC Kyoto Protocol negotiations. He has served on a number of WTO dispute settlement panels. His research interests include climate change policy, the science-policy connections, international governance, and trade.

CATHERINE MURUPAENGA-IKENN

Catherine (B/B.Soc.Sci, LLM) hails from the two Māori peoples of Ngāti Kuri and Te Rarawa whose traditional territories are located in the Far North of the North Island. In the mid 90's she worked as a Government Policy Analyst and as a solicitor in Wellington. Since 2000, she project managed her Te Rarawa peoples' historical Treaty claims settlement negotiations with the Crown, and later became a negotiator herself for her Ngāti Kuri peoples' settlement negotiations - both settlements of which were legislated in 2015. In 2005 Catherine was awarded the United Nations Office of the High Commissioner for Human Rights Indigenous Fellowship (representing the Pacific), and continues to represent her peoples in different UN work, as well as on two technical working groups (regarding climate change, and the Monitoring Mechanism for the UN Declaration on the Rights of Indigenous Peoples) affiliated with the National Iwi Chairs Forum. She has also held several trustee positions for her peoples' governing boards, and local schools (she's currently on the Board for Kaitaia College).

GREG SEVERINSEN - PANELLIST

Greg Severinsen holds a PhD in law (on the resource management implications of carbon geo-sequestration technology) from Victoria University of Wellington, as well as an LLB (hons) and a BA from the University of Canterbury. Prior to joining Environmental Defence Society, Greg practised in resource management law and worked as a policy analyst at the Ministry for the Environment. Over the last decade he has published, presented and taught both at home and abroad on a range of resource management and environmental law topics. Greg's primary focus at EDS is a first principles rethink of our resource management system.

